

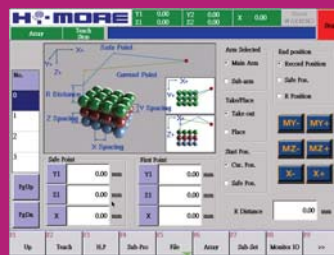
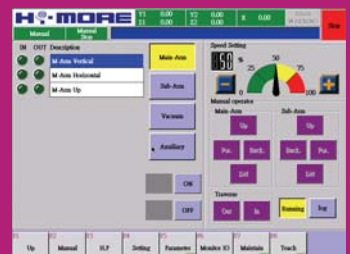
J-SERIES ROBOT



- For injection molding machine up to 2,000-ton
- Robot maximum payload up to 30-kg
- Up to 6 servo-driven axes
- PC-based R6000 series control system with Linux real-time technology
- Standard Euromap 12 interface
- User-friendly graphical interface with 8.4" color TFT-LCD touch-panel pendant
- Freely programming both on-line and off-line
- Built-in PLC and subprogram functions for downstream equipment integration
- Up to 360 programmable inputs and 288 programmable outputs
- Standard USB interface to upload and download program files
- Standard Ethernet connection for remote control and management



8.4-inch touch-panel control pendant



J-Series Capability Examples

- Part removal “A” or “B” side
- Insert molding operations: IML (In Mold Labeling), studs, bolts, bushings and so on
- Gate cut operations: Single or multiple points
- Difficult part extraction (undercut or multiple motions to release the part)
- Palletizing or stacking of parts
- Secondary operations (loading and unloading other automation cells within the work area)

The above examples are just a few of the many uses for J-series robot. With its fully flexible teaching and spare I/O, you are in control. Easy to use hand held R6000 pendant that gives you all the information needed to get the job done right. The three items you can't do without, High Speed, User Friendly & Flexible Motion. Please contact us for additional information!